



## Missouri State Wide Imagery Program

The Missouri GIS Advisory Council’s Data Development Committee is developing a plan for state-wide leaf off imagery using the state’s recently awarded Photogrammetric Services contract. The state contract has been designed for local government; four contractors have been pre-qualified allowing state and local government to obtain bids from each contractor without having to go through the Request for Proposals (RFP) process.



The committee plan is to encourage local governments to use the contract during the same flying season, the larger the area being flown the cheaper it is per square miles. Currently the Columbia to Jefferson City region, the East West Gateway region, and several cities have indicated interest for 2015, while the Mid-America region and several other counties need imagery in 2014. All the cities and counties that have shown interest to date need six inch imagery but the contract allows for other resolutions. If enough local governments agree to fly during the same flying season, the state can cooperate with the local government in exchange for having that imagery resampled to the ½ meter resolution they need, and pay for the remainder of the state at the lower resolution. Due to tight budgets this will be a multi-year project as was done in 2007-09. We would also like to make this an ongoing program where you would know that your region of the state would be flown every two-four years and you could plan accordingly.

Meeting notes of the planning meetings are posted on the MGISAC website ([www.mgisac.org](http://www.mgisac.org)), Data Development section under 2014-15 Statewide Imagery Project.

If you are interested in this project please visit [www.flymoimagery.com](http://www.flymoimagery.com) for more information or contact Paul Wright at [Paul.Wright@oa.mo.gov](mailto:Paul.Wright@oa.mo.gov) or call at 573-522-5034. I will add you to the mailing list, and if you send a shapefile will also add your area to the map. Our next step is to obtain estimates for this work; the estimates will be more accurate if we have your area included.

Paul Wright  
Director – GIS, State of Missouri Office of Administration



# Orthophotography

Orthophotography has been the foundation of local and regional mapping efforts in Missouri the beginning of the first GIS program in the state. Simply put, an orthophoto is an aerial photo with the distortion of elevation removed so it can be used as a basemap for computerized mapping systems. They allow users to accurately measure distances, calculate areas, determine shapes of features, perform change detection and are commonly used for assets management, Census, tax assessment, flood mapping, planning, and economic development.

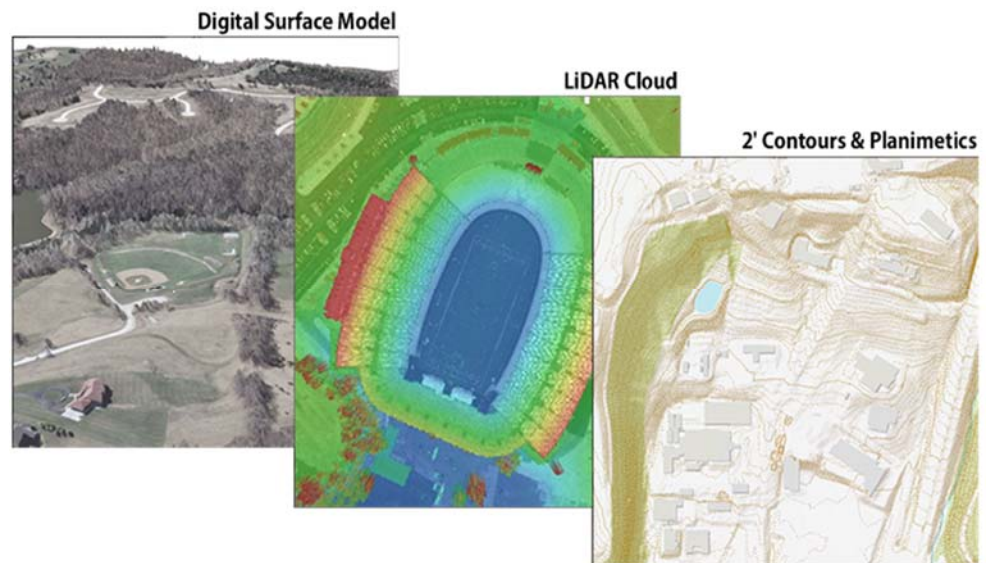
Sensor (digital and film camera) technology and processing software continues to improve the quality and accuracy of the ortho datasets. At the same time, higher pixel resolution imagery is becoming more affordable, and many counties are poised using 6-inch resolution 3-inch resolution in cities.



# LiDAR

LiDAR is a remote-sensing technology that uses laser pulses to measure surfaces and objects in three dimensions. Millions of data points are collected from a sensor that can be mounted in a variety of aircraft and ground-based mobile platforms.

In recent years LiDAR has become the predominant method for county-wide topographic mapping in Missouri. The technology has changed the way elevation data is acquired and processed, and has made topographic data more accurate – and affordable – than ever before.



# Pricing

For more information please visit [www.flymoimagery.com](http://www.flymoimagery.com) or contact Paul Wright at [Paul.Wright@oa.mo.gov](mailto:Paul.Wright@oa.mo.gov) / 573-522-5034. Our next step is to obtain estimates for this work; the estimates will be more accurate if we have your area included.