

Missouri 2015 Leaf-Off Imagery Program

MGISAC Data Development

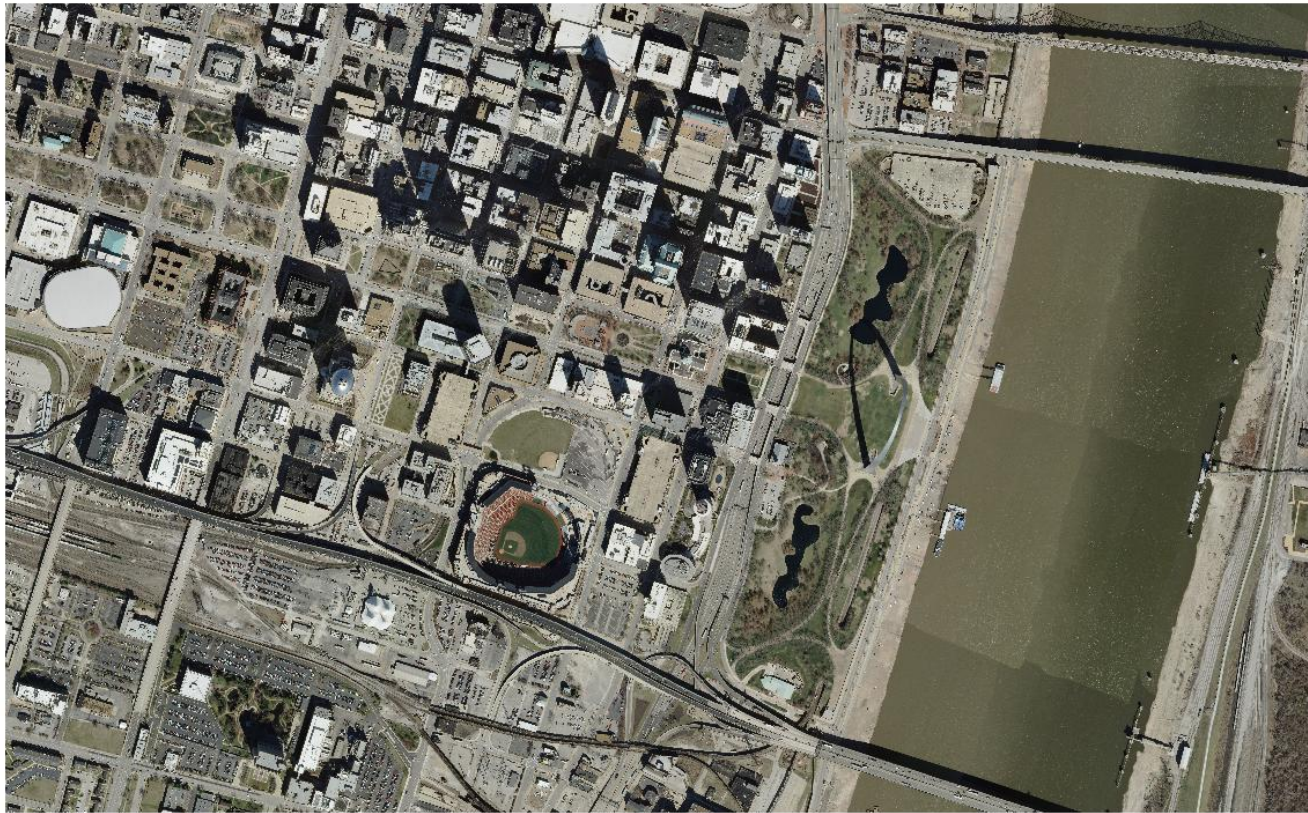
History

- Missouri last state-wide imagery project in 2007-08
- Two-foot resolution
- Utilized a State Contract
- Included a buy-up option for local government

April 16, 2013 Meeting

- Notice was sent out via MGISAC list servers
 - Did you know about this meeting?
- 27 attended: federal, state, regional, and local
- State agencies interested in ½ meter or 2 foot 4 band color
- Locals at meeting all wanted 6”
- We continue to collect requirements

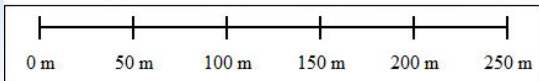
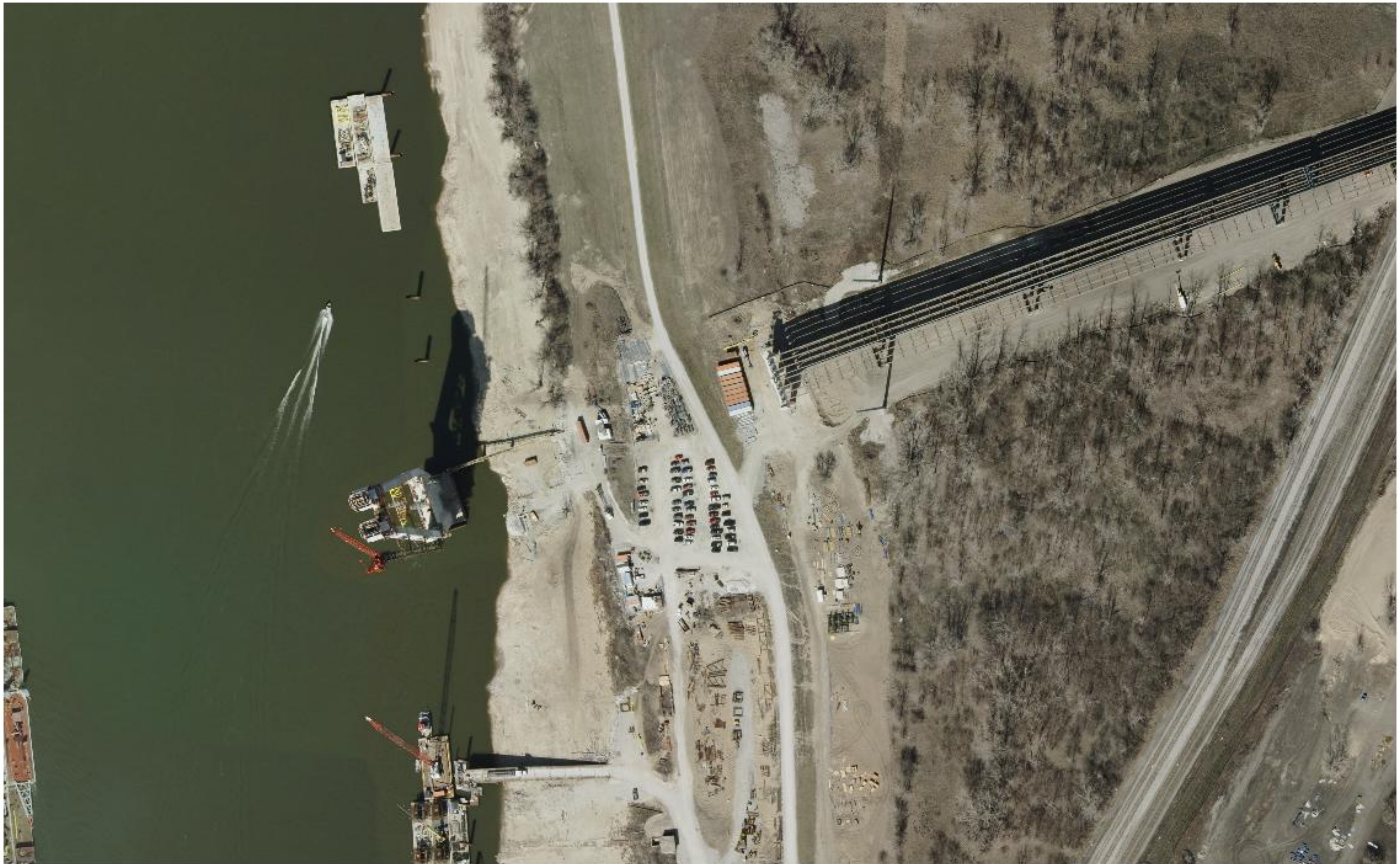
East-West Gateway 2012



Close-up of the Arch



New I-70 Bridge



2015 Plan

State Photogrammetric Mapping Products and Services contract (C213036001):

- Four prequalified vendors
- Able to request quotes from all four
- Buy up options for various scales

2015 Plan

State Photogrammetric Mapping Products and Services contract includes:

- Imagery
- LiDAR
- Planimetrics

Why participate

- The state agencies are not likely to have funding to complete the state in one year
- Local government can use state contract
 - Vendors are pre-qualified
 - No need for an RFP
 - Doesn't cost anything to get a quote
- Project scope will result in best price possible
 - Guaranteed work for winning bid
 - The more organizations that participate, the less each will need to contribute
- Contractors can resample 6" to 2' cheaply

Who is interested

- **RPCs:** St Louis, Kansas City
- **Counties:** Boone, Cole, Callaway, Camden, Taney
- **Cities:** St Joseph, Maryland Heights, Columbia
- Conservation, National Guard
- NGA through USGS

** Need more interest for success*

Who to contact

- Tracy Schloss – State of Missouri
- Jason Warzinik – Mid Missouri
- Stan Balsman – Southeast MO RPC-GIS Director
- Andy Wagner – Maryland Heights-GIS Coordinator
- Jennie Reiman – East-West Gateway Council of Governments

For more background information, sample PAQ, and status maps please visit:

www.flymoimagery.com

Tracy Schloss

Tracy.Schloss@oa.mo.gov

573-522-5654